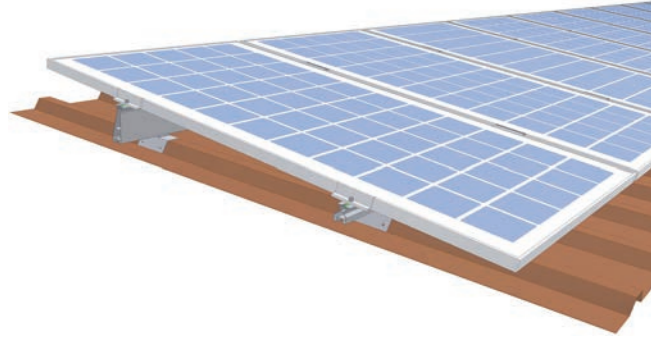


FixZ-7

Features and Benefits

- Quickly and easily fastens to the proven KlickTop™ connection system
- Ventilation aides in module cooling
- Distributes load evenly
- Increase in module pitch improves self cleaning



The **FixZ-7** is designed for flat trapezoidal sheet metal roofs (less than 10 degree slope). Such roofs are typically ill-equipped to support traidational solar systems. The FixZ-7 is designed to distrubute the load evenly while optimizing the power output of the system by allowing for a 5 – 7 degree tilt angle.

FixZ-7 and Fix2000™ KlickTop™

Simple to use and inexpensive, the FixZ-7 works in conjunction with Schletter’s Fix2000 KlickTop connector for quick module mounting. The KlickTop eliminates additional on-site assembly by allowing for quick connection of the rails to the Fix2000 attachment, which penetrates directly into the corrugation with four self-drilling screws.

- [Fix2000 KlickTop Product Sheet](#)
- [General Roof Checklist for ordering](#)

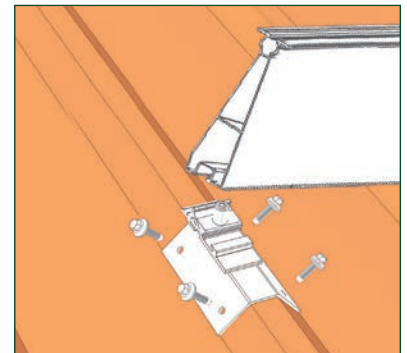
Due to structural considerations, using fastening elements other than the Fix2000 KlickTop requires the addition of a lower rail (cross rail interconnection).

Application Suggestions

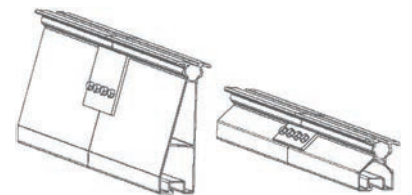
The FixZ-7 is designed for module heights from about 5 – 6.5 ft and setting angles from 5 – 7 degrees.

The position of the clamping locations should be within the range of 1/4 – 1/5 of the module height (according to module manufacturer instructions). A minimum distance of 4.9 ft to the roof edges should be maintained, as well as 3.93 ft to both the north and south edges of the roof. Be sure to consult local regulations.

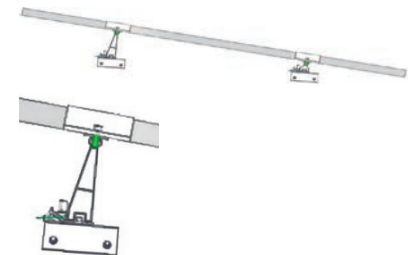
The FixZ-7 should not be used in conjunction with the SingleFix-V.



➊ Mount the Fix2000 with KlickTop connector with consideration to the shade distance to modules rows.

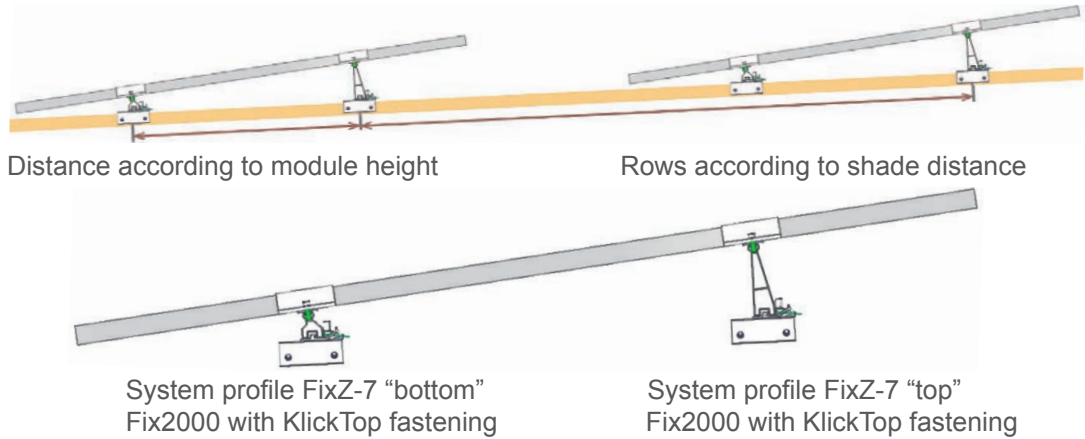


➋ Mount the cross beam rails of the FixZ-7. Attach profile joint with a connector plate and self-drilling screws.



➌ Mount the modules.

Technical Data

Material	System profiles and KlickTop attachment made of aluminum Fix2000 components and screws made of stainless steel
Roof Application	Suitable for all current forms of trapezoidal sheet metal; Production is customized and accurate to measurement according to General Roof Checklist
Structural analysis	Structural analysis according to current NBC/provincial codes
System Structure	
Warranty	20-year limited warranty

For more information or a quote, please contact technical sales at 519-946-3800 or at sales@schletter.ca. More information on all Schletter products can be found online at www.schletter.ca.