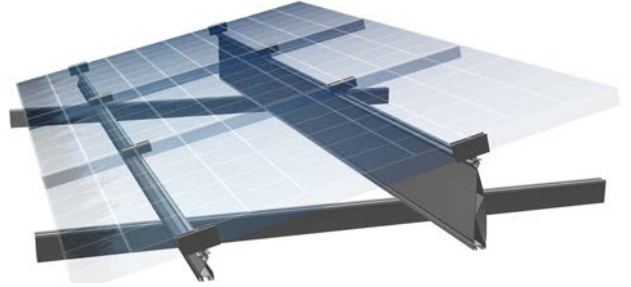


FixZ-15

Features and Benefits

- Developed based upon the proven FixZ-7™
- 12 – 15 degrees of tilt possible
- Improved ventilation and better self-cleaning
- Distributes loading evenly



The **FixZ-15** is designed for flat trapezoidal sheet metal roofs (less than 10 degree slope). Such roofs are typically ill-equipped to support traditional solar systems. The FixZ-15 is designed to distribute the load evenly while optimizing the power output of the system by allowing for a 12 – 15 degree tilt angle.

FixZ-15 and Fix2000™ KlickTop™

Simple to use and inexpensive, the FixZ-15 works in conjunction with Schletter's Fix2000 KlickTop connector for quick module mounting. The KlickTop eliminates additional on-site assembly by allowing for quick connect of the rails to the Fix2000 attachment, which penetrates directly into the corrugation with four self-drilling, self-tapping screws.

- ➔ [Fix2000 KlickTop Product Sheet](#)
- ➔ [General Roof Checklist for ordering](#)

Due to structural considerations, using fastening elements other than the Fix2000 KlickTop requires the addition of a lower rail (cross rail interconnection).

Application Suggestions

The FixZ-15 is designed for module heights from about 5 – 6.5 ft and setting angles from 12 – 15 degrees.

The position of the clamping locations should be within the range of 1/4 – 1/5 of the module height (according to module manufacturer instructions). A minimum distance of 4.9 ft to the roof edges should be maintained, as well as 3.93 ft to both the north and south edges of the roof. Be sure to consult local regulations.

The FixZ-15 should not be used in conjunction with the SingleFix-V.



❶ Install Fix2000 KlickTop

Consider shading in relation to the position of the module rows.



❷ Mount the FixZ-15 cross beam

Top: Connector plate with self-drilling screws

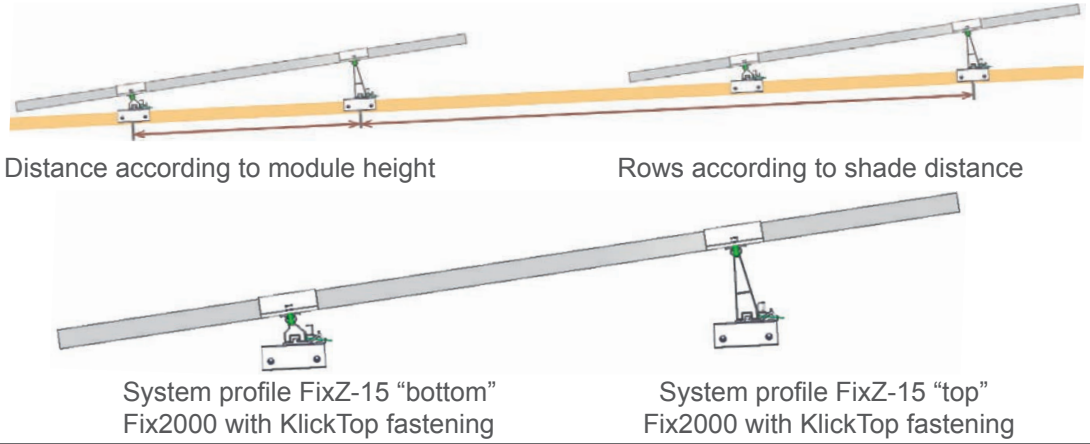
Bottom: Mount connector E



❸ Install modules



Technical Data

Material	System profiles and KlickTop attachment made of aluminum Fix2000 components and screws made of stainless steel
Roof Application	Suitable for all current forms of trapezoidal sheet metal; production is customized and based on the General Roof Checklist
Structural analysis	Structural analysis according to current NBC/provincial codes
System Structure	
Warranty	20-year limited warranty

For more information or a quote, please contact technical sales at 519-946-3800 or at sales@schletter.ca. More information on all Schletter products can be found online at www.schletter.ca.