

## FS Uno

- **ETL Classified to UL Subject 2703<sup>1</sup>**
- 100% galvanized steel mounting system
- High level of pre-fabrication for faster field installations
- Increased distances between foundation supports further aids in cost reduction
- G210 galvanized steel posts for extended product longevity



Based on the proven **FS System™**, installed in the world's largest PV power plants, Schletter introduces a NEW option for ground mount photovoltaic systems, the **FS Uno**. An all steel solar mounting system which goes beyond the competition in quality, ease-of-installation, and affordability. While the FS System offers unbeatable product longevity and cost through economy of scale, the FS Uno offers a lower price point even for modest sized PV installations.

Through extensive analysis and design, Schletter engineers developed a single post system which can install in the traditional south-facing orientation or with a unique east-west orientation for difficult layout situations. Regardless of the design specifications, the FS Uno upholds the quality standards for which Schletter is known.

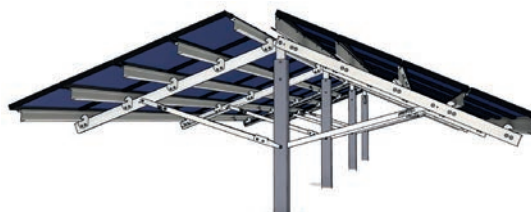
All of Schletter's solar mounting systems are built to withstand years of relentless environmental conditions. In order to meet such expectations, the FS Uno uses only high quality galvanized steel. The result is a steel solar mounting system designed to outlast the competition.

### What to Expect from Schletter

- When other mounting providers say it can't be done, with Schletter, it can
- 100% NBC code compliant systems, with PE wet stamps available in most provinces
- Exceeding the competition in providing quality steel and aluminum products
- Team of engineers offering full in-house services
- In-house geotechnical services
- Semi-automated production for the fastest turnaround time in the industry
- Over 20-years solar mounting engineering and manufacturing experience



FS Uno South Facing



FS Uno-100 East-West Facing

<sup>1</sup> Grounding & Bonding (UL Subject 2703), identified with ETL Listed Mark. See Intertek© ETL Listed Directory for more information.



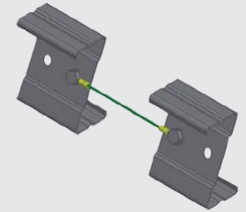
### Quick, On-Site System Installation

- Foundation posts are quickly installed using GAYK hydraulic ram
- Foundation head is attached to foundation post with two bolts
- Girder is connected to foundation head with one bolt
- Unfold the strut and connect to foundation post with one bolt
- Module rails attach securely with connector hooks
- Modules connected using adapted versions of Schletter's Grounding Rapid2+™ clamps

### Connect Multiple Racks

For PV installations with more than one mounting system, electrically bonding individual racks is easy and affordable with Schletter's **Bonding Jumper**.

- Connects directly to purlin
- Available in 6-inch to 48-inch lengths
- Electrically bonds adjacent systems forming a continuous ground path



### Technical Data

<b>Material</b>	<ul style="list-style-type: none"> <li>• Fastening elements, bolts: Stainless steel, grade 304</li> <li>• Rails: Steel, sheet galvanized</li> <li>• Pile-driven foundations (posts): Steel, cold-rolled, G210 galvanized</li> </ul>
<b>Logistics</b>	<ul style="list-style-type: none"> <li>• Maximum level of pre-assembly</li> <li>• Transport to construction site</li> </ul>
<b>Delivery and services</b>	<ul style="list-style-type: none"> <li>• Geotechnical investigation and structural analysis</li> </ul>
<b>Structural analysis</b>	<ul style="list-style-type: none"> <li>• Structural analysis based on a geotechnical investigation for local terrain condition</li> <li>• Individual systems analysis based on local load values</li> <li>• Design loads according to current NBC and provincial codes</li> <li>• Highly efficient, material-saving profile geometries</li> <li>• Verification of all construction components based on FEM-calculation</li> </ul>

As with Schletter's FS System, the FS Uno foundation posts (included in mounting system) can be installed using the GAYK hydraulic ram for quick installation of the system posts.

