

## CompactGrid

### Features and Benefits

- Solution for east/west roofs and sheet metal roofs
- Fast and easy installation
- Designed to IBC code
- Optimum load transfer—even with large purlin distances

CompactGrid is a tilted mounting system for flat and low-pitched roofs, east/west facing. This system is specifically designed to distribute load evenly while spanning large distances between purlins while connecting to a variety of roof types.

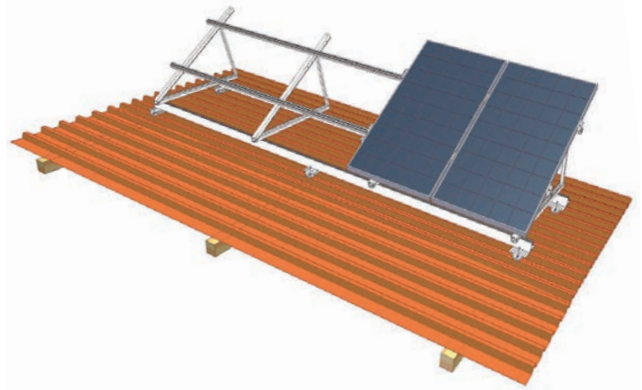
#### Load Optimization

Two DN rails, which run below each row triangle-shaped supports, are mounted at optimized distances on roof. The occurring loads are safely and evenly transferred by the DN rails into the roof clamps and thereby into the roof cladding. In ideal cases, the DN0-beams are installed without profile connectors at distances of about 2 cm in order to avoid tensions caused by linear expansion.




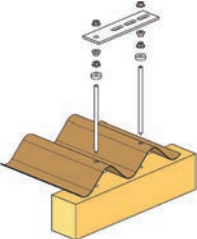
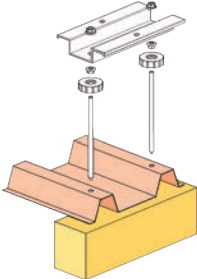
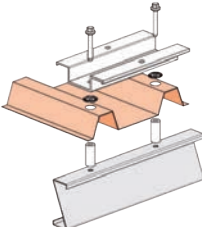
**NOTE: With this mounting type, the roof cladding must safely absorb occurring wind loads and transfer them into the substructure!** This should be verified on site by a structural engineer. If unclear, attachment to the substructure is preferable to connecting to the roof cladding only.

#### Inclined elevations

In case of south-west or south-east roofs, often an exact orientation of the module rows to the south is desired — here CompactGrid offers another option besides CompactVario to adapt the mounting rack to the local requirements in an ideal manner. For an even more flexible mounting, we recommend the application of a mounting claw in combination with FixT (see FixT product sheet).



## Technical Data

<b>Material</b>	Fastening elements, bolts: Stainless steel 304 and 316 Profiles (rails): Aluminum alloy 6105 T5																											
<b>Structural Analysis</b>	Individual system analysis based on local load values Design loads according to current NBC/provincial codes P.E. stamped drawings and calculations																											
<b>Purlin (Rail) Examples</b>	<div style="display: flex; justify-content: space-around; align-items: flex-start;"> <div style="text-align: center;">  <table border="1"> <thead> <tr> <th>DN0</th> <th>b</th> <th>h</th> </tr> </thead> <tbody> <tr> <td>mm</td> <td>40</td> <td>40</td> </tr> <tr> <td>inches</td> <td>1.57</td> <td>1.57</td> </tr> </tbody> </table> </div> <div style="text-align: center;">  <table border="1"> <thead> <tr> <th>DN1</th> <th>b</th> <th>h</th> </tr> </thead> <tbody> <tr> <td>mm</td> <td>40</td> <td>80</td> </tr> <tr> <td>inches</td> <td>1.57</td> <td>3.15</td> </tr> </tbody> </table> </div> <div style="text-align: center;">  <table border="1"> <thead> <tr> <th>DN2.5</th> <th>b</th> <th>h</th> </tr> </thead> <tbody> <tr> <td>mm</td> <td>50</td> <td>110</td> </tr> <tr> <td>inches</td> <td>1.97</td> <td>4.33</td> </tr> </tbody> </table> </div> </div> <p>Lower side of mounting beam is designed as a shift groove for M10 bolted connections. There is a Klick™ groove on the upper side where an M10 square nut is clicked into place within the Klick-groove using an M10 Klick-component. Supports and other connection elements are screwed into this square nut.</p>	DN0	b	h	mm	40	40	inches	1.57	1.57	DN1	b	h	mm	40	80	inches	1.57	3.15	DN2.5	b	h	mm	50	110	inches	1.97	4.33
DN0	b	h																										
mm	40	40																										
inches	1.57	1.57																										
DN1	b	h																										
mm	40	80																										
inches	1.57	3.15																										
DN2.5	b	h																										
mm	50	110																										
inches	1.97	4.33																										
<b>Connector Examples</b>	<div style="display: flex; justify-content: space-around; align-items: flex-start;"> <div style="text-align: center;">  <p>Double set for corrugated roofs</p> </div> <div style="text-align: center;">  <p>FixT wood</p> </div> <div style="text-align: center;">  <p>FixT steel</p> </div> </div> <p>Double set for corrugated roofs FixT wood/steel Sheet metal roof clamps Roof hooks, etc.</p>																											
<b>Warranty</b>	20-year limited warranty																											

For more information or a quote, please contact technical sales at 519-946-3800 or at [sales@schletter.ca](mailto:sales@schletter.ca). More information on all Schletter products can be found online at [www.schletter.ca](http://www.schletter.ca).